

Jonathan Cooper
20 Park Walk London SW10 0AQ

Press Release

HARRY STEEN

Et in Arcadia ego

8th – 29th March 2018

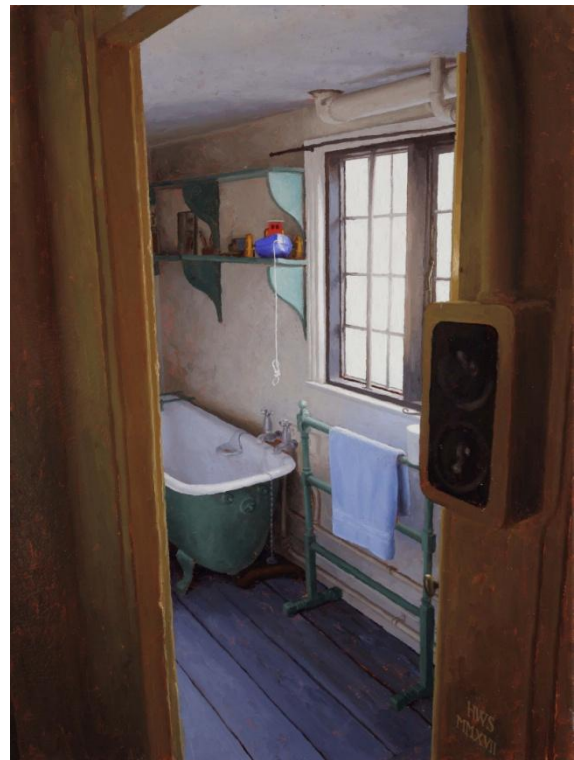


Sérilly Cabinet, oil on board, 12 x 10ins (30.5 x 25.4cm), by Harry Steen

press@jonathancooper.co.uk | +44 (0)20 7351 0410

Canadian artist Harry Steen returns to Jonathan Cooper in March 2018 for his third solo show with the gallery.

Always enigmatic, Steen's light-filled paintings are infused with longing for lost and rapidly changing worlds. The myths and legends of Ancient Greece and Rome continue to fascinate the artist, whose atmospheric works are peopled by Hellenic gods such as Eurydice and Aphrodite, and fuse these universal archetypes with a personal vision of his childhood home.



LEFT: *Out Window to Terrace*, oil on board, RIGHT: *Rainthorpe - Little Bathroom*, both oil on board, 16 x 12ins (40.6 x 30.5cm), by Harry Steen

Many works in the exhibition are inspired by recent visits to an English Tudor manor, Rainthorpe Hall, Norfolk, and capture the echoes of its inhabitants past and present. Others recall villas and gardens of the American Gilded Age long since demolished, or the elegant perfection of Ancien Régime interiors, testament to the vanished beauty of its rococo world.

Filled with darkness and light, Steen's paintings celebrate the beauty of a paradise lost while lamenting its passing, and share a vision of his own Arcadia.

'I always want a picture to convey some thrill of atmosphere or association on a subconscious level. Very often, there are sinister or tragic elements lurking behind the surface, which are crucial components of the kind of beauty I'm attempting to convey' – Harry Steen

NOTES TO EDITORS



Harry Steen (B. 1977) lives and works in Calgary, Alberta. He graduated from the University of Calgary with a BFA in Art in 2002, and held his first solo show with Jonathan Cooper in 2013.

Jonathan Cooper - founded in 1988 - is a London based contemporary art gallery specialising in representational drawing, painting, photography and sculpture. The gallery is a member of SLAD (The Society of London Art Dealers), BADA (The British Antique Dealers Association) and LAPADA (The Association of Art & Antique Dealers), and regularly exhibits at international art fairs.

PRESS INFORMATION

For more information or images please contact Rebecca Wall on +44 (0)20 7351 0410 or at rebeccawall@jonathancooper.co.uk

LISTING INFORMATION

The gallery is open Monday – Friday 10am – 6.30pm and Saturday 11am – 4pm.

Free Admission.

Jonathan Cooper, 20 Park Walk, London, SW10 0AQ.

How to find us:

Bus: 211, 11 and 22 on the Kings Road or 14 and 414 on the Fulham Road

Tube: South Kensington or Fulham Broadway



ABOVE: *Rainthorpe - Hall Fireplace*, oil on board, 12 x 16ins (30.5 x 40.6cm), by Harry Steen